



# Metlakatla-led Assessment of the Ksi Lisims LNG Project Community Scoping Session

Meetings were held November 29, 2023

**For those not able to attend, this document will provide an overview prior to completing the survey**

## What is the Metlakatla-led Assessment?

The Metlakatla Stewardship Society (MSS) is leading a Rights Impact Assessment of the proposed Ksi Lisims LNG Project. The goal of the assessment is to identify the potential impacts of the project on Metlakatla's rights, culture, and way of life. MSS is leading this assessment to ensure that it aligns with Metlakatla's values, concerns, and priorities.

As a first step, MSS is asking Metlakatla members to share their views about the proposed project and any concerns or issues that they may have about it. MSS will use this information to focus the Rights Impact Assessment on what matters most to Metlakatla members.

MSS is working with The Firelight Group to carry out community research and reporting for the Rights Impact Assessment.

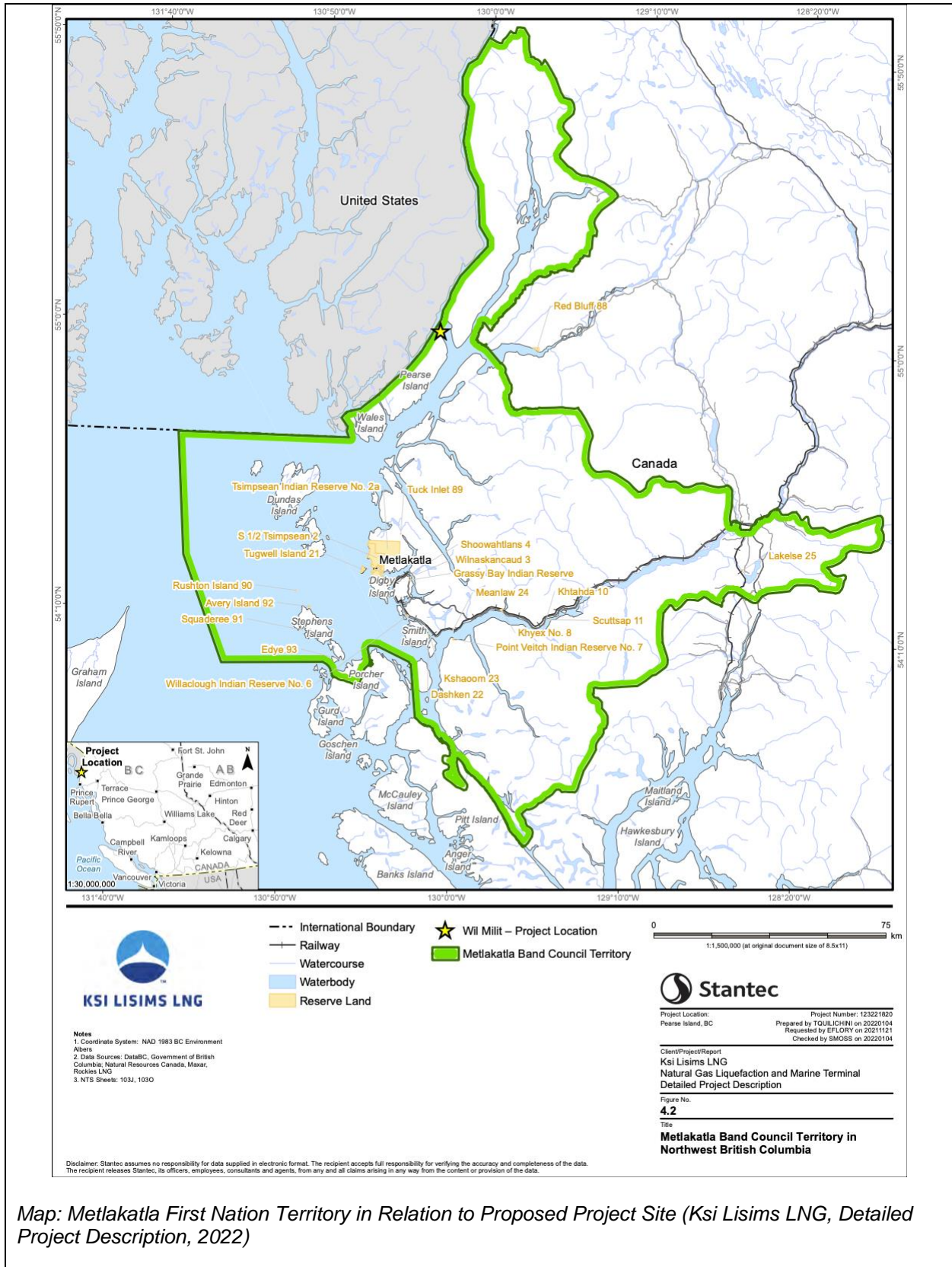
## What is the Project?

The Ksi Lisims LNG is a proposed floating liquefied natural gas (LNG) facility and marine export terminal located on the northern tip of Pease Island, north of Prince Rupert, BC. The marine shipping route would travel through Portland Inlet to Chatham Sound, then out into the Pacific Ocean through Dixon Entrance. Ksi Lisims would receive LNG from either the Prince Rupert Gas Transmission Pipeline (PRGT) or the Westcoast Connector Gas Transmission Pipeline (WCGT), exporting between 140 and 160 LNG shipments per year.

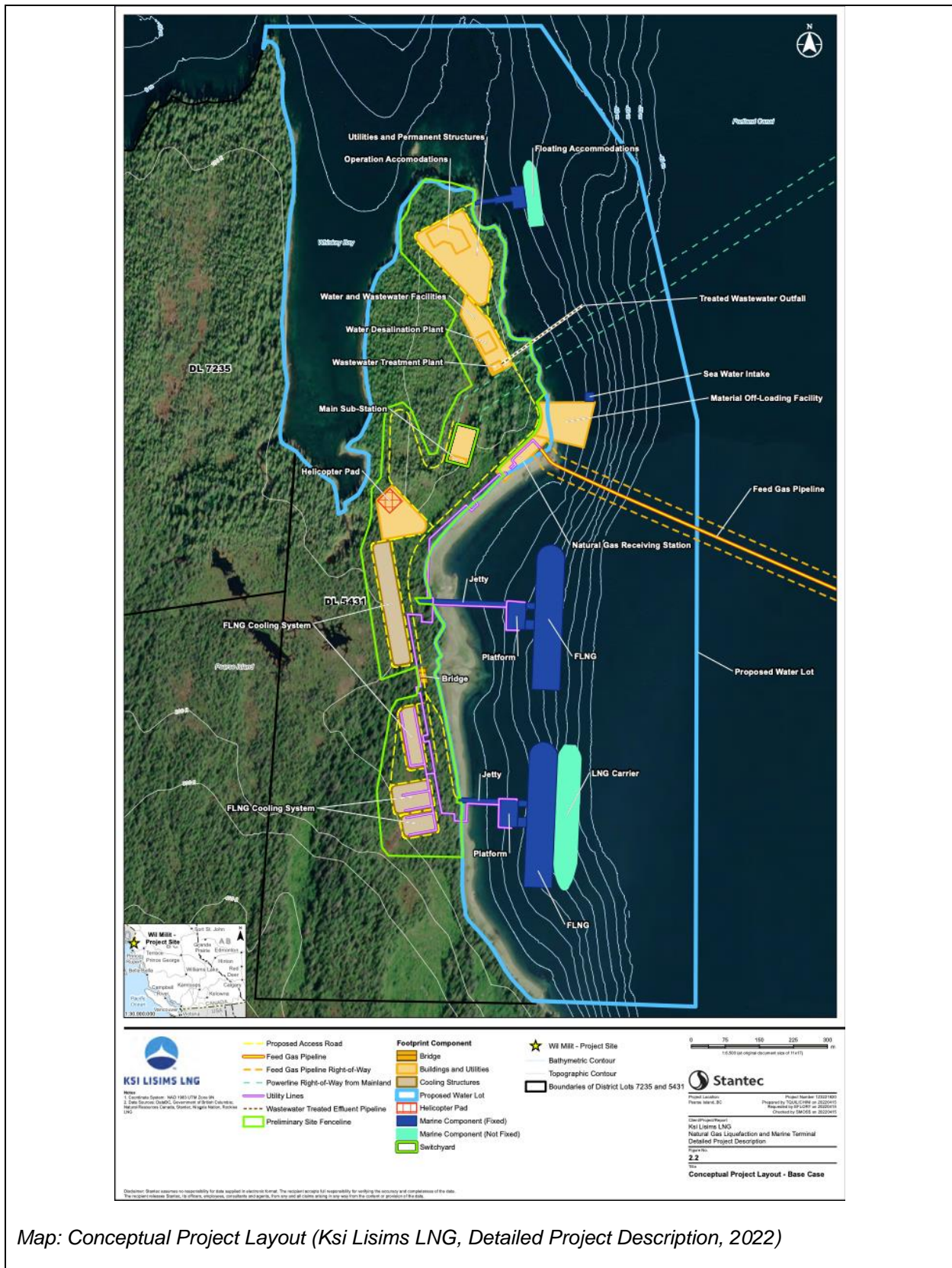


*Photo of the Project site at the Northern End of Pearse Island, View to the South (Ksi Lisims LNG, Detailed Project Description, 2022)*

The project is subject to review under the 2018 BC *Environmental Assessment Act*, the federal *Impact Assessment Act* and Chapter 10 of the *Nisga'a Final Agreement*. The BC Environmental Assessment Office (EAO) is leading the environmental assessment on behalf of BC and the Impact Assessment Agency of Canada.







Map: Conceptual Project Layout (Ksi Lisims LNG, Detailed Project Description, 2022)



## Questions?

**For additional information on the Project or the survey, please contact:**

Jane Calvert  
Environmental Assessment Manager, Metlakatla Stewardship Society  
[EAManager@metlakatla.ca](mailto:EAManager@metlakatla.ca)  
250-622-2816

**All surveys come back to MSS.  
Thank you for your time!**